



THERMAL MANAGEMENT

ReflectSleeve® 1450E

Product Highlights

- Operating temperature up to +200°C (+392°F)
- Excellent protection against radiant heat
- Open design aides in installation
- Fluid and chemical resistant
- Tubular construction no sew line
- Low Profile

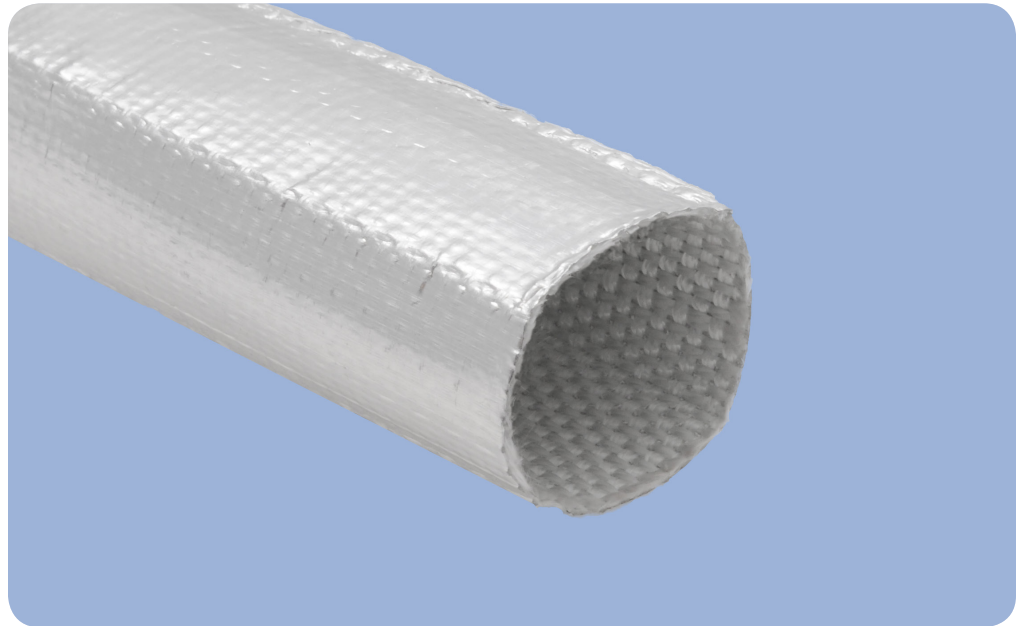
Typical Applications

- Brake tubes and hoses
- Power steering hoses
- Cable assemblies
- Heater hoses
- Air conditioning hoses
- Wire Harnesses



Our manufacturing sites are certified ISO 9001, ISO/TS 16949, or AS/EN 9100, and ISO 14001

RS1450E_07202017



ReflectSleeve® 1450E is a woven, one-piece fiberglass sleeve that is bonded with an aluminized heat-seal film using a polymeric adhesive. A special manufacturing process permits the sleeve to boast a virtually seamless construction.

ReflectSleeve 1450E's smooth outer surface helps to provide improved protection for components that are exposed to radiant heat. Providing superior fluid resistance, ReflectSleeve 1450E is engineered to protect hoses and wire harnesses in passenger vehicles, light and heavy trucks and off-highway vehicles.

BentleyHarris®
Protection Products

Performance Data – ReflectSleeve® 1450E

Property	Test Method	Result
Temperature Rating	240 hours at +225°C (+200°C rating)	Pass +200°C (+392°F)
Thermal Endurance	BH100-503	No degradation or delamination (25mm above a +538°C heat source for 6 hours)
Low Temperature Flexibility	BH100-016A	Pass -40°C (-40°F)
Flammability	SAE J369	Self-extinguishing
Fluid Resistance	BH100-003B	Pass

All numeric performance data shows average or typical values. Please consult your sales representative for product drawings, test reports and OEM approvals.

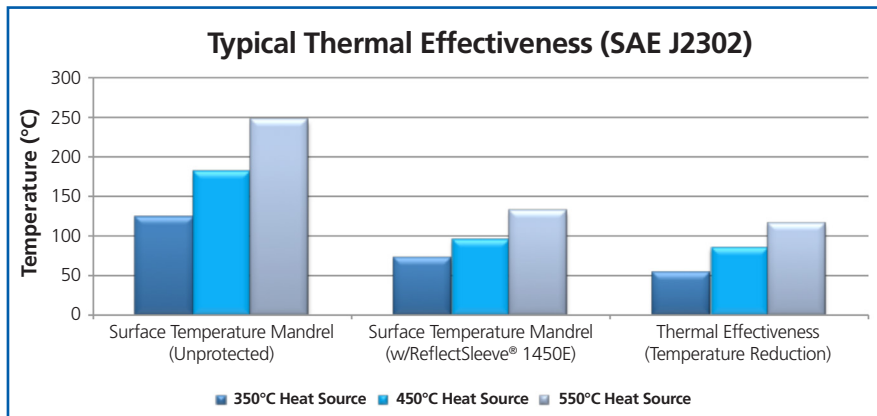
Construction and Typical Product Characteristics

Outer Layer	Aluminum
Inner Layer	Fiberglass multifilament

Availability

ReflectSleeve 1450E is available in a range of sizes and cut to your specification. Color is aluminum (silver). Please contact your sales representative for availability

Thermal Effectiveness of Sleeving Insulation



Note: Mandrel is parallel to and 25mm (1") away from heat source

The information and illustrations given herein are believed to be reliable. Federal-Mogul makes no warranties as to their accuracy or completeness and disclaims any liability in connection with their use. Federal-Mogul's only obligations are those in the standard term of sale for this product and Federal-Mogul will not be liable for any consequential or other damages arising out of the use or misuse of this product. Users should make their own evaluations to determine the suitability of the product for specific applications.

©2008 Federal-Mogul Systems Protection, manufacturer of Bentley-Harris protection products. The trademarks displayed are owned by Federal-Mogul Corporation, or its subsidiaries, in one or more countries.

**FEDERAL
MOGUL**
Systems Protection

USA: (1) 800 926 2472
Europe: (33) 3 44 39 06 06
Japan: (81) 45 479 0201
China: (86) 21 6182 7688

www.federalmogul.com/sp